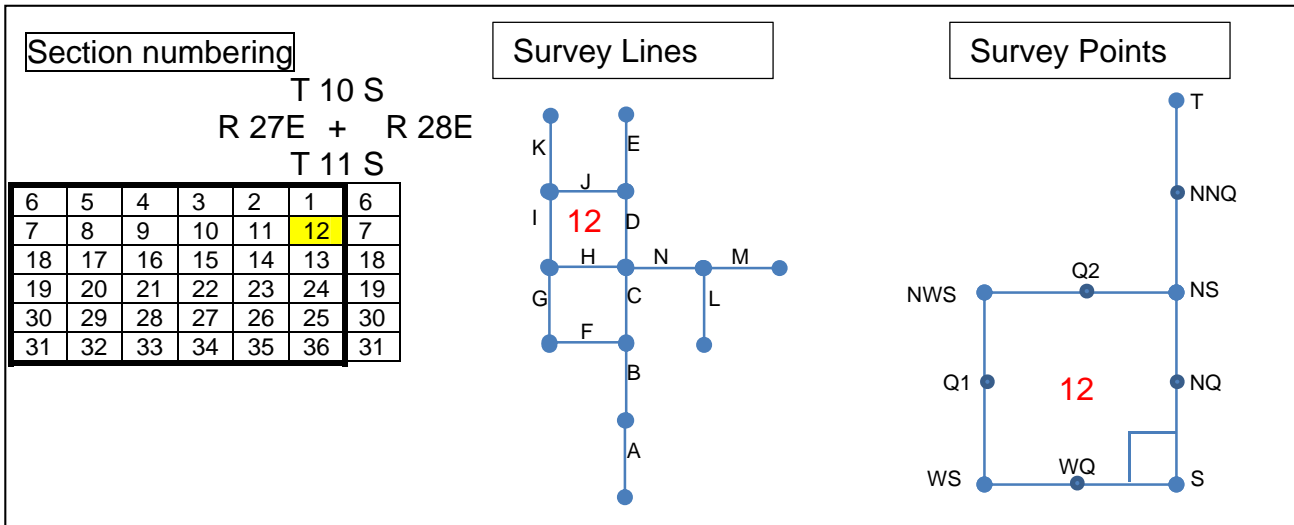


Original Cliff Camp Survey Notes

Hall 1883

1 Chain (Gunter's) = 100 links = 66 ft

80 chains = 5280 ft = 1 mile



Below text in black is the complete and accurate transcription of Hall's official Field Notes from June 1883 to May 1884

Line A: East boundary of third section south (pages 28-29)

North between sections 25 and 30

Variation 16° 15' East.

From a point three miles south of point S heading due North

Descend.

20.50 Cross creek, 12 links wide, course S. 70° W. and ascend.

40.00 Set a quartz stone 20 x 8 x 8 inches 15 inches in the ground for quarter section corner marked $\frac{1}{4}$ on west face and raised a mound of stone alongside.

Pits impracticable. From which,

A yellow pine 30 inches diameter bears N. 64° W., 20 links distant marked $\frac{1}{4}$ S.B.T.

No other tree within limits.

48.00 Top of ridge bears NE and SW and descend.

80.00 Set a post 4 feet long 4 inches square 24 inches in the ground for corner to sections 19, 24, 25, and 30 marked,

T. 11 S. S. 19 on N.E.

R. 28 E. S. 30 on S.E.

R. 27 E. S. 25 on S.W. and
S. 24 on N.W. faces with 2 notches on S. and 4 notches on north edges from
which,

A tamarack 18 inches diameter bears N. 23° E., 78 links distant marked,
T. 11 S. R. 28 E. S. 19 B. T.

A tamarack 26 inches diameter bears S. 53 1/2° E., 97 links distant marked,
T. 11 S. R. 28 E. S. 30 B. T.

A tamarack 15 inches diameter bears S. 28° W., 15 links distant marked,
T. 11 S. R. 27 E. S. 25 B. T.

A red fir 40 inches diameter bears N. 32° W., 104 links distant marked,
T. 11 S. R. 27 E. S. 24 B. T.

Land, mountainous

Soil, second rate

Heavy timber of pine, fir, and tamarack

Undergrowth of chaparral

Line B: East boundary of second section south (pages 29-30)

North between sections 19 and 24

Variation 16° 15' East.

From a point two miles south of point S heading due North

Descend.

17.00 Cross creek, 15 links wide, course W. and ascend.

40.00 Set a granite stone 24 x 10 x 8 inches 18 inches in the ground for quarter section
corner marked ¼ on west face and raised a mound of stone alongside.

Pits impracticable. From which,

A fir 30 inches diameter bears N. 70° W., 86 links distant marked ¼ S.B.T.

No other tree within limits.

54.60 Top of ridge bears N. 80° E. and S. 80° W. and descend.

80.00 Set a post 4 feet long 4 inches square 24 inches in the ground for corner to
sections 13, 18, 19, and 24 marked,
T. 11 S. S. 18 on N.E.
R. 28 E. S. 19 on S.E.
R. 27 E. S. 24 on S.W. and
S. 13 on N.W. faces with 3 notches on S. and 3 notches on north edges from
which,

A pine 36 inches diameter bears N. 77 ½° E., 126 links distant marked,
T. 11 S. R. 28 E. S. 18 B. T.

A pine 48 inches diameter bears S. $3\frac{1}{2}^{\circ}$ W., 51 links distant marked,
T. 11 S. R. 28 E. S. 19 B. T.

A tamarack 16 inches diameter bears S. 18° W., 37 links distant marked,
T. 11 S. R. 27 E. S. 24 B. T.

A tamarack 20 inches diameter bears N. 2° W., 20 links distant marked,
T. 11 S. R. 27 E. S. 13 B. T.

Land, mountainous

Soil, second rate

Heavy timber of pine, fir, and tamarack

Undergrowth of chaparral

Line C: East boundary of first section south (pages 29-30)

North between sections 13 and 18

Variation $16^{\circ} 15'$ East.

From a point one mile south of point S heading due North

Descend.

18.00 Cross creek, 8 links wide, course east and ascend.

40.00 Set a granite stone 12 x 10 x 6 inches 8 inches in the ground for quarter section corner marked $\frac{1}{4}$ on west face and raised a mound of stone alongside.

Pits impracticable. From which,

A pine 10 inches diameter bears N. $16\frac{1}{2}^{\circ}$ W., 60 links distant marked $\frac{1}{4}$ S.B.T.

A pine 12 inches diameter bears N. 28° E., 76 links distant marked $\frac{1}{4}$ S.B.T.

80.00 **Point S** Set a post 4 feet long 4 inches square 24 inches in the ground for corner to sections 7, 12, 13, and 18 marked,

T. 11 S. S. 7 on N.E.

R. 28 E. S. 18 on S.E.

R. 27 E. S. 13 on S.W. and

S. 12 on N.W. faces with 4 notches on S. and 2 notches on north edges from which,

A red fir 16 inches diameter bears S. 8° W., 30 links distant marked,
T. 11 S. R. 27 E. S. 13 B. T.

A yellow pine 24 inches diameter bears N. 86° W., 49 links distant marked,
T. 11 S. R. 27 E. S. 12 B. T.

A tamarack 12 inches diameter bears S. 78° E., 15 links distant marked,
T. 11 S. R. 28 E. S. 18 B. T.

A tamarack 30 inches diameter bears N. 1° E., 10 links distant marked,
T. 11 S. R. 28 E. S. 7 B. T.

Land, mountainous

Soil, second rate
Heavy timber of pine, fir, and tamarack
Undergrowth of chaparral

Line D: East Boundary of Section 12

(pages 31-32)

North between sections 7 and 12

Variation 16° 15' East.

From point S heading due North

Ascend

21.00 **Point B1** Top of spur bears N.E. and S.W. and descend

40.00 **Point NQ** A granite stone 72 x 48 x 36 inches in place in the ground for quarter section corner marked $\frac{1}{4}$ on west face with x at exact corner point and raised a mound of stone alongside.

Pits impracticable

From which

A tamarack 18 inches diameter bears N. 11° W. 86 links distant marked $\frac{1}{4}$ S.B.T.

No other tree within limits.

80.00 **Point NS** Set a quartz stone 15 x 10 x 6 inches 10 inches in the ground for corner to sections 1, 6, 7, and 12 marked with 5 notches on south and 1 notch on north edges and from which,

A fir 36 inches diameter bears N. 12 $\frac{1}{2}$ ° E. 54 links distant marked, T.11 S. R 28 E. S. 6 B. T.

A fir 20 inches diameter bears S. 42° E. 60 links distant marked, T. 11 S. R. 28 E. S. 7 B. T.

A tamarack 12 inches diameter bears S. 37° W. 150 links distant marked, T 11 S. R. 27E. S. 12 B. T.

A fir 14 inches diameter bears N. 41° W. 180 links distant marked, T. 11 S. R. 27 E. S. 1 B. T.

Land, mountainous

Soil, second rate

Heavy timber of pine, fir, and tamarack

Undergrowth of chaparral

Line E: Continuing North to the Township corner

(Pages 32 and 33)

North, between sections 1 and 6. Variation 16° 15' East.

From point NS heading due North

Descend

- 40.00 **Point NNQ** Set a quartz stone 18 x 10 x 8, 12 inches in the ground for quarter section corner marked $\frac{1}{4}$ on west face and raised a mound of stone alongside. Pits impracticable.

From which,

A tamarack 18 inches diameter bears N 29° W., 80 links distant marked, $\frac{1}{4}$ S. B. T.

No other tree within limits.

- 42.50 **Point R1** Cross N. Fork of King's river 30 links wide, course S. 80° W. and ascend.

- 80.00 **Point T** Set a granite stone 20 x 10 x 6 inches, 15 inches in the ground for corner to townships 10 and 11 south ranges 27 and 28 east marked with 6 notches on each edge, and raised a mound of stone alongside.

Pits impracticable. From which,

A tamarack 16 inches diameter bears N. 10° E., 52 links distant marked, T. 10 S. R. 28 E. S. 31 B. T.

A tamarack 24 inches diameter bears N. 36° E., 275 links distant marked, T. 11 S. R. 28 E. S. 6 B. T.

A tamarack 14 inches diameter bears N 26 $\frac{1}{2}$ ° W., 31 links distant marked, T. 10 S. R. 27 E. S. 36 B. T.

No other tree within limits.

Land mountainous

Soil, second rate

Heavy timber of pine, fir, and tamarack

Undergrowth of chaparral

I carefully examined the adjustments of my solar compass today, particularly the latitude and reversing apparatus and found them correct.

July 10, 1883

Line F: South boundary of next section south

(pages 10-11)

East on a random line between sections 13 and 24 Variation 16° 15' East.

- 40.00 Set a temporary quarter section corner.

80.27 Intersect east boundary of township 33 links north of corner, I run
North $89^{\circ} 46'$ west on a true line between sections 13 and 24

From point SS azi 270.2333°

Descend

40.14 Set a post 3 feet long 3 inches diameter, with marked stone 12 in the ground for
quarter section corner, marked $\frac{1}{4}$ S. on N. face and raised a mound of stone 1 $\frac{1}{2}$
feet high, 3 $\frac{1}{2}$ feet base around post.

Pits impracticable, from which

Yellow pine 34 in. dia. Bears N. 60° E., 78 links distant. Marked $\frac{1}{4}$ S.B.T.

Fir 22 in. dia. Bears S. $59 \frac{1}{2}^{\circ}$ W., 95 links distant. Marked $\frac{1}{4}$ S. B. T.

80.27 The corner to sections 13, 14, 23, and 24.

Land mountainous

Soil third rate

Heavy timber of pine, fir, and cedar

Undergrowth of chaparral and manzanita

Line G: West boundary of next section south

(pages 11-12)

North between sections 13 and 14

Variation $16^{\circ} 15'$ East

From SW corner of section 13 due North

Descend.

17.85 A fir 22 in. dia.

19.06 Cross gulch 9 links wide, course W

29.27 Cross north fork of King's river 120 links wide, course SW and ascend

40.00 A fir 18 in dia. Which I mark $\frac{1}{4}$ S. on W. face for quarter section corner, from
which a

Fir 16 in dia. Bears N. 14° E., 55 links distant, marked $\frac{1}{4}$ S. B. T.

Yellow pint 6 in. dia. Bears S. 48° W., 117 links distant, Marked $\frac{1}{4}$ S. B. T.

44.00 Top of bluff bears NE. and SW. and descend

67.33 Cross gulch 10 links wide, course SE, and ascend

80.00 **Point WS** Set a granite stone 36x24x6 inches, 27 inches in the ground for
corner to sections 11, 12, 13, and 14, marked with 4 notches on S. and 1 notch
on E. edges and raised a mound of stone along side

Pits impracticable, from which a,

Yellow pine 18 in. dia. Bears N. 40 1/2° E., 203 links distant marked T. 11 S., R. 27 E., S 12 B. T.

Yellow Pine 30 in. dia. Bears S. 36°E., 106 links distant, marked T. 11 S., R. 27 E., S. 13 B. T.

Yellow pine 8 in. diam. Bears S. 81° W., 25 links distant, marked T. 11 S., R. 27 E., S. 14 B. T.

Black oak 4 in dia. Bears N. 34° W., 73 links distant, marked T. 11 S., R. 27 E., S. 11 B. T.

Land mountainous

Soil third rate

Heavy timber of pine, fir, and oak

Undergrowth of chaparral and manzanita

Line H: South boundary of Section 12

(Pages 12 & 13)

East on a random line between sections 12 and 13. Var 16° 15' East

40.00 Set temporary quarter section corner.

80.34 Intersect east boundary of township 20 links north of corner to sections 7, 12, 13, and 18, from which corner I run

North 89° 51' west on a true line between sections 12 and 13. Var. 16° 15' east

From point S azi 270.1500°

Descend

40.17 **Point WQ** Mark a cross at a point on bedrock for quarter section corner, from which a,

Yellow pine 20 in dia. bears S. 27 1/2° W., 310 links distant, marked 1/4 S. B. T.

No other tree within limits.

61.97 **Point R2** Cross north fork of King's River 120 links wide, course S. 5° W. and ascend.

80.34 **Point WS** The corner to sections 11, 12, 13, and 14

Land mountainous

Soil third rate

Timber of pine and fir

Dense undergrowth of chaparral and manzanita

Line I: West Boundary of Section 12

(Pages 13 & 14)

North between sections 11 and 12. Var. $16^{\circ} 15'$ east

From point WS heading due North

Ascend

6.00 **Point B2** Top of bluff bears E. and W. and descend

40.00 **Point Q1** Set a granite stone 14 x 14 x 10 inches, 9 inches in the ground for quarter section corner, marked $\frac{1}{4}$ on W., from which a,

Yellow pine 30 in dia. bears S. 35° E., 85 links distant, marked $\frac{1}{4}$ S. B. T.

Black oak 4 in dia. bears N. $79\frac{1}{2}^{\circ}$ W., 12 links dist., marked $\frac{1}{4}$ S. B. T.

53.70 Yellow pine 26 in. dia.

80.00 **Point NWS** Mark a granite stone 4 x 5 x 8 feet in exact point for corner to sections 1, 2, 11, and 12, 5 notches on S. and 1 on N. edges from which a,

Black oak 4 in dia. bears N. 49° E., 75 links dist., marked T. 11 S., R. 27 E., S. 1 B. T.

Yellow pine 18 in. dia. bears S. 33° E., 27 links distant, marked T. 11 S., R. 27 E., S. 12 B. T.

Yellow pine 10 in. dia. bears 2. 74° W., 59 links distant, marked T. 11 S., R. 27 E., S. 11 B. T.

Yellow pine 10 in. dia. bears N. 15° W., 56 links distant, marked T. 11 S., R. 27 E., S. 2 B. T.

Land mountainous

Soil third rate

Heavy timber of pine, oak, and fir

Undergrowth of chaparral and manzanita

Line J: North Boundary of Section 12

(Page 14 & 15)

East on a random line between sections 1 and 12. Var. $16^{\circ} 15'$ east

40.00 Set a temporary quarter section corner.

80.26 Intersect east boundary of township 31 links north of corner to sections 1, 6, 7, and 12, from which corner I run

North $89^{\circ} 47'$ west on a true line between sections 1 and 12. Var. $16^{\circ} 15'$ east

From point NS azi 270.2167°

Descend

36.69 **Point R3** Cross north fork of King's River 115 links wide, course S. 72° W. and ascend

- 40.13 **Point Q2** Set a granite stone 19 x 11 x 6 inches, 14 inches in the ground for quarter section corner, marked $\frac{1}{4}$ on n., from which a,
Yellow pine 12 in. dia. bears N. $59\frac{1}{2}^{\circ}$ E., 110 links distant, marked $\frac{1}{4}$ S. B. T.
Cedar 16 in. dia. bears S. $44\frac{1}{2}^{\circ}$ W., 163 links distant, marked $\frac{1}{4}$ S. B. T.
- 80.26 **Point NWS** The corner to sections 1, 2, 11, and 12
Land mountainous
Soil third rate
Heavy timber of pine, oak, and cedar
Undergrowth of chaparral and manzanita
August 18, 1883

Line K: West Boundary of next section north (Page 14 & 15)

- North on a random line between sections 1 and 2. Var. $16^{\circ} 15'$ east
- 40.00 Set a temporary quarter section corner.
- 79.87 Intersect north boundary of township 14 links west of corner to sections 1, 2, 35, and 36, I run
South $6'$ west on a true line, between sections 1 and 2 Var. $16^{\circ} 15'$ east
From point NWS azi 359.9000°
Descend
- 8.37 Cross trail bears N. 70° E., and S. 70° W.
- 38.07 Cross gulch 10 links wide, course E. and ascend
- 39.87 Yellow pine 16 in. dia., which I marked $\frac{1}{4}$ S. on W. face for quarter section corner, from which a
Yellow pine 16 in. dia. bears N. 40° E., 76 links distant, marked $\frac{1}{4}$ S. B. T.
Yellow pine 12 in. dia. bears S. $15\frac{1}{2}^{\circ}$ W., 29 links distant, marked $\frac{1}{4}$ S.B.T.
- 59.94 Yellow pine 20 in. dia.
- 79.87 The corner to sections 1, 2, 11, and 12.
Land mountainous
Soil third rate
Heavy timber of pine, oak, and fir
Undergrowth of chaparral and manzanita

Line L: East Boundary of Section SE of Section 12 (Pages 54 and 55)

North, between sections 17 and 18 (R. 28 E.) Variation 16° 20' East.

From a point 1 mile E and 1 mile S of Point S heading due North

Descend through timber

3.40 Trail to Denkie bears N. 80° W. and S. 80° E.

32.00 Enter meadow bears E. and E.

40.00 Set a quartz stone 15 x 14 x 12, 10 inches in the ground for quarter section corner marked ¼ on west face and raised a mound of stone alongside. Pits impracticable. From which bears,

Tamarack 12 in. dia. N 11° E., 51 links distant marked, ¼ S. B. T.

Tamarack 8 in. dia. N 9° W., 85 links distant marked, ¼ S. B. T.

No other tree within limits.

42.00 Leave meadow and enter timber bears E. and W.

80.00 **Point ES** Set a granite stone 16 x 14 x 12 inches, 11 inches in the ground for corner to sections 7, 8, 17, and 18, marked with 4 notches on S. and 5 notches on E. edges, and raised a mound of stone alongside.

Pits impracticable. From which bears,

Tamarack 12 in. dia. N. 22° E., 53 links distant marked, T. 11 S. R. 28 E. S. 8 B. T.

Tamarack 40 in. dia. S. 57° E., 20 links distant marked, T. 11 S. R. 28 E. S. 17 B. T.

Tamarack 12 in. dia. N. 34° W., 40 links distant marked, T. 11 S. R. 28 E. S. 7 B. T.

No other tree within limits.

Land mountainous

Soil, second rate

Timber of pine and fir

Dense undergrowth of manzanita

Line M: South Boundary of second section East (pages 56 & 57)

East on a random line between sections 8 and 17 Var. 16° 20' east

40.00 Set a temporary quarter section corner.

79.71 Intersect north and south line 38 links north of corner to sections 8, 9, 16, & 17, I run North 89° 44' west on a true line between sections 8 and 17 Var 16° 20' east

From a point two miles E of Point S azi 270.2667°

- In meadow through scattering timber
- 5.70 Leave meadow bears NW. and SE.
- 35.90 Top of spur bears S. and N. and descend
- 39.86 Tamarack 20 in. dia. which I marked $\frac{1}{4}$ S. on N. face for quarter section corner
from which bears
Tamarack 20 in. dia. N. $14\frac{1}{2}^{\circ}$ E., 18 links distant
Tamarack 6 in. dia. S. 10° W., 3 links distant
Both marked $\frac{1}{4}$ S. B. T.
- 75.60 Enter meadow bears N. and S.
- 79.71 **Point ES** The corner to sections 7, 8, 17, and 18
Land mountainous, Soil second rate, Timber of pine, fir, and tamarack,
Undergrowth of Manzanita

Line N: South Boundary of first section east

(pages 56 & 57)

West on a random line between sections 7 and 18 Var. 16° 20' east

40.00 Set a temporary quarter section corner.

78.76 Intersect west boundary of township 33 links north of corner to sections 7, 12, 13, & 18, from which I run

North 89° 46' east on a true line between sections 7 and 18 Var 16° 15' east

From Point S azi 89.7667°

Descend in timber.

19.00 **Point C2** Cross creek 6 links wide, course NW.

38.76 **Point EQ** Set a granite stone 24 x 16 x 12 inches, 18 inches in the ground for quarter section corner, marked ¼ on N. face and raised a mound of stone alongside.

Pits impracticable, from which bears

Fir 48 in. dia. bears N. 68° E., 24 links distant

Fir 16 in. dia. S. 11° W., 18 links distant.

Both marked ¼ S. B. T.

47.00 **Point M1** Enter meadow and leave timber bears N. and S.

51.00 Leave meadow and enter timber bears N. and S.

66.50 **Point B3** Top of spur bears S. 10° W. and N. 10° E. and descend

77.90 Enter meadow and leave timber bears NW. and SE.

78.76 **Point ES** The corner to sections 7, 8, 17, and 18

Land mountainous, Soil second rate, Timber of pine, fir, and tamarack,
Undergrowth of Manzanita

May 14, 1884